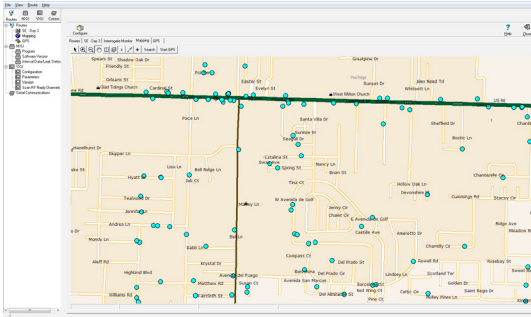


Description

User-friendly full color MS Windows screen and graphics



Route maps are automatically repositioned as the vehicle moves along



Each meter location is shown and readings are verified as the route is traversed

Features

INTRODUCTION

Sensus AutoVU software provides graphic on-screen mapping for the Sensus RadioRead™ and FlexNet Drive-By Solutions. The AutoVU software module enhances vehicle based radio reading.

PROGRAM FEATURES

- Provides GPS based mapping interface to graphically depict the location of each meter along a meter reading route and instantly verify each reading
- Uses precise locating and mapping technology made possible by existing low earth orbiting Global Positioning Satellites (GPS)
- Meter locations along each route can be optionally set by the utility to change color or disappear from the screen as each meter reading is successfully collected.
- The on-screen map automatically shifts position when used with the GPS System, keeping the meter reading vehicle location “positioned”

on the map as it travels along the meter reading route.

- Provides ability to include map layers - i.e., water, street names, etc. when the maps are displayed.
 - Shortens meter reading time and helps reduce costs
 - On-screen instant reading verification helps eliminate the need to re-drive the complete meter reading route to obtain readings which may have been missed
 - Helps eliminate guesswork in establishing the most efficient routes for radio based meter reading
 - Alerts the meter reader of “high” and “low” reading limit discrepancies and low battery signals
 - Non-radio equipped meters can be depicted on the digital route maps to alert the user that manual or special readings are required at specified locations
- Reading route statistics are saved and displayed as the routes are loaded and being read.

SUPPORT

Participation in the Sensus Systems Support Program is highly recommended. The fee for the first year of the Sensus Systems Support Program is included in the price of the AutoVU software. Initial program coverage begins on the ship date of the Sensus AutoVU System software to customer. Yearly renewal notices will be mailed to customers approximately 60 days prior to their first year expiration date. Customers who do not choose to renew during their renewal period can contact Sensus at any time in future years to enroll in the System Support Program.

© All products purchased and services performed are subject to Sensus' terms of sale, available at either <http://na.sensus.com/TC/TermsConditions.pdf> or 1-800-638-3748. Sensus reserves the right to modify these terms and conditions in its own discretion without notice to the customer.

This document is for informational purposes only.