

Description

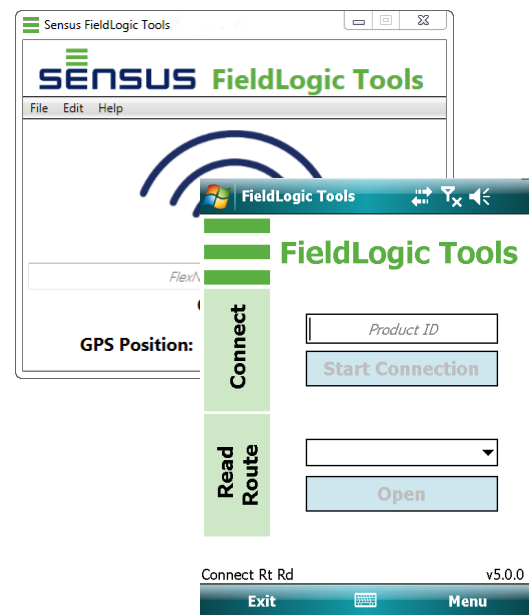
FieldLogic is a suite of tools designed to simplify programming and reading Sensus endpoint devices.

Benefits of FieldLogic include:

- Easy management of multiple handheld devices
- A fast and simple one-step installation process
- Simultaneous RadioRead and SmartPoint device reading
- Improved business process integration with a work order tool interface

FieldLogic Software contains two applications: FieldLogic Hub and FieldLogic Tools.

- FieldLogic Hub is a PC-based application for device configuration and route management setup
- FieldLogic Tools is a handheld or PC-based application for working with SmartPoint® devices and meters and route reading.
- FieldLogic Tools replaces the existing handheld functionality in AutoRead, FlexPro, UniPro and SMSHApp tools.



Features

FIELDLOGIC HUB

Hub allows utilities to manage multiple handheld devices which in turn configure/read SmartPoint or RadioRead modules. Hub manages devices, configuration bundles, and the import/export of routes.

Configuration bundles are set up prior to fieldwork by the utility to control the handheld functionality and configuration of endpoints. This reduces the time it takes to accomplish tasks in the field such as reading meters, new installation, or meter changes.

Routes can be imported from a billing system, loaded on to a handheld, read, and then exported back through Hub to a billing system.

FIELDLOGIC TOOLS: CONNECT

Connect communicates with and programs Sensus endpoints. Connect uses Bundles to preconfigure the options installers see when setting up Sensus endpoints in the field. This simplifies the installation process, improving the speed at which installers can perform their job while decreasing the opportunity for errors. Connect also is used to deactivate and troubleshoot endpoints.

FIELDLOGIC TOOLS: READ ROUTE

Read Route is used to collect meter reading data from Sensus endpoints. It provides field personnel with route information along with other pertinent information the utility configures. Alarms are provided in the field, allowing problem investigation to occur while field personnel are at the location. The tool supports simultaneous reading of SmartPoint, RadioRead and TouchRead technologies, eliminating the need for field personnel to carry multiple devices.

© All products purchased and services performed are subject to Sensus' terms of sale, available at either <http://na.sensus.com/TC/TermsConditions.pdf> or 1-800-638-3748. Sensus reserves the right to modify these terms and conditions in its own discretion without notice to the customer.

This document is for informational purposes only, and SENSUS MAKES NO EXPRESS WARRANTIES IN THIS DOCUMENT. FURTHERMORE, THERE ARE NO IMPLIED WARRANTIES, INCLUDING WITHOUT LIMITATION, WARRANTIES AS TO FITNESS FOR A PARTICULAR PURPOSE AND MERCHANTABILITY. ANY USE OF THE PRODUCTS THAT IS NOT SPECIFICALLY PERMITTED HEREIN IS PROHIBITED.

For more information, visit us at sensus.com